


PRODUCT GROUP CHARTER

Automated Test Systems and Support Equipment



November 2016

Approved:



JOHN F. THOMPSON
Lieutenant General, USAF
Commander, AFLCMC

RECORD OF CHANGES

Version	Effective Date	Summary
1.0	24 Jun 15	Basic Document (Support Equipment Product Group)
2.0	1 Nov 16	Added Automated Test System Product Group

TABLE OF CONTENTS

1.0 INTRODUCTION.....	4
1.1 AUTHORITY.....	4
1.2 PURPOSE.....	4
2.0 ROLES/RESPONSIBILITIES.....	4
3.0 RELATIONSHIPS.....	8
4.0 RELATED PROCESSES.....	9
5.0 DEFINITIONS.....	9
ANNEX A, AUTOMATED TEST SYSTEMS PRODUCT GROUP.....	11
ANNEX B, SUPPORT EQUIPMENT PRODUCT GROUP.....	13

1.0 INTRODUCTION:

- 1.1 **AUTHORITY:** Air Force policy has established Product Groups (PG) that exist within AFLCMC. AFI 63-101/20-101 directs PGs be chartered when enterprise management of material used to support multiple weapon systems is desired to improve interoperability and decrease costs through commonality. Roles, responsibilities, and relationships documented in this charter will be advocated as updates in future policy evolution.
- 1.2 **PURPOSE:** This charter documents the roles, responsibilities, relationships, related processes, and definitions specific to the following established PGs: Automated Test Systems (ATS) and Support Equipment (SE). Specific duties are included in Annex A and B, respectively.

2.0 ROLES/RESPONSIBILITIES:

- 2.1 **AFLCMC/CC:** Advocates use of common assets to minimize the proliferation of peculiar assets at all levels while ensuring system requirements are met.
- 2.2 **AFLCMC/PK-PZ:** Provides contracting support functions to PG organizations to optimize execution.
- 2.3 **AFLCMC/XP-OZ:**
 - 2.3.1 Ensures review of this charter is accomplished every three years or sooner, as required.
 - 2.3.2 Facilitates policy, guidance, and issue resolution, as required.
- 2.4 **Program Executive Officer (PEO) or Executing Director:**
 - 2.4.1 Advocates use of common assets, to the maximum extent possible, for programs in their portfolios.
 - 2.4.2 System-level PEO or Executing Director and PG PEO will collaborate on disputes across portfolios. Reference Figure 1.
- 2.5 **Program Office Program Manager (PM):**
 - 2.5.1 Ensures early collaboration with PGs on system and contract life-cycle requirements, issues, and activities.
 - 2.5.1.1 Ensures timely communication of Capability Development Document (CDD)/Requirements Correlation Table (RCT)/Air Force Form 1067, Modification Proposal, in relation to time of fielding requirement.

2.5.1.2 Submits Support Equipment Recommendation Data (SERD) for all new requirements to SE PG and ATS PG per AFI 63-101/20-101.

2.5.1.3 Ensures timely communication of system needs and related priorities to support enterprise business decision making for PGs.

2.5.2 Establishes product support arrangements with PGs for common asset management, if roles/responsibilities are beyond those already documented as part of this charter.

2.5.3 Identify peculiar assets, which have common applicability or that may have common applicability in the future, as common candidates to the appropriate PG for transfer into their portfolio. Reference Figure 1.

2.5.3.1 Utilizes Program Realignment process to transfer agreed upon responsibilities per AFI 63-101/20-101 and AFLCMC Standard Process R03, Program Transition.

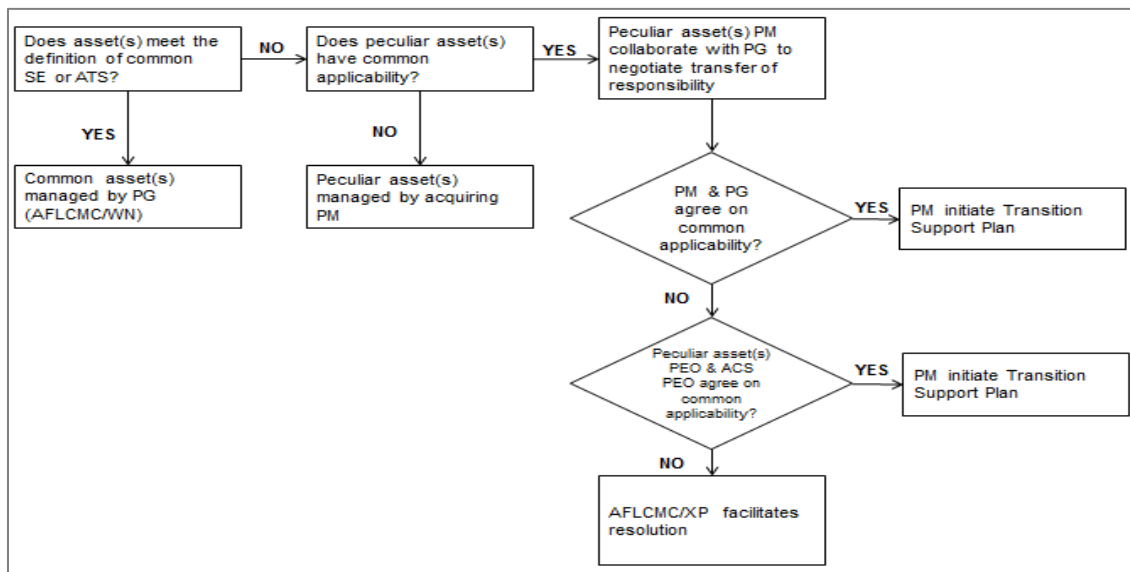


Figure 1, Decision Tree for Management Responsibility

2.5.4 Advocates/requests for funds to support unfunded acquisitions/modifications to meet program needs.

2.5.5 Ensures early identification of new requirements that may result in configuration changes to common PG assets.

2.5.6 Advocates for gaining transparent fleet management capability and individual equipment health through Logistics, Installations and Mission Support - Enterprise View (LIMS-EV), or other appropriate system.

2.6 Product Group (PG):

- 2.6.1 Provides acquisition, product support, logistics, contracting, financial management, engineering, intelligence (cyber), system safety, test & evaluation, and technology maturation capability to support enterprise requirements.
- 2.6.2 Ensures Product Group data is entered and maintained in System Metric and Reporting Tool (SMART), ensuring minimal data entry requirements are met per AFI 63-101/20-101.
- 2.6.3 Ensures financial execution data is reported via Comprehensive Cost and Requirement (CCaR) per AFI 63-101/20-101.
- 2.6.4 Ensures Product Support reporting in enhanced Logistics Health Assessment per AFLCMC/LG-LZ guidance.
- 2.6.5 Ensures standardized procedures and processes are in place for life cycle management.
- 2.6.6 Coordinates with program office PMs on issues, activities, requirements, funding, and planning relevant to the system.
 - 2.6.6.1 Assists program office PM in the completion of CDDs/RCT/Air Force Form 1067 to ensure robust definition.
- 2.6.7 Verifies requirements and associated quantities are consistent with the Allowance Authorizations.
- 2.6.8 Negotiates with program office PM on Program Realignment actions if a requirement is a capability that exists in the AF inventory, but outside the current common portfolio.
- 2.6.9 Provides assistance and consultation to program offices, PMs, and MAJCOMs regarding purchase of new or replacement assets to evaluate existing capabilities against new requirements.
 - 2.6.9.1 Provides economies of scale for AF common requirements.
 - 2.6.9.2 Arrives at common solutions to most effectively and economically meet AF operational needs.
 - 2.6.9.3 Effectively balances funding streams to translate into capability.
 - 2.6.9.4 Utilizes AF priorities and emerging needs to arrive at optimal acquisition activities.

- 2.6.9.5 Acquires common assets to the maximum extent possible, common and interoperable with other Services and across multiple systems.
- 2.6.10 Supports/administers the SERD process in order to maximize use of common assets to minimize AF's costs and deployed footprint.
- 2.6.11 Maintains a repository listing of peculiar assets in order to identify future peculiar to common reclassification opportunities.
- 2.6.12 Dispositions peculiar candidates from program office PM for entry into the PG common portfolio.
 - 2.6.12.1 Submits recommendation for peculiar as common candidates to ACS PEO.
- 2.6.13 Executes product support responsibilities per AFI 63-101/20-101.
- 2.6.14 Provides technical oversight for all managed assets to include, but not limited to, Technical Orders (TOs), engineering technical assistance requests, Deficiency Reports (DRs), and nuclear safety deficiency reports (e.g., Dull Swords).
- 2.6.15 Retains Operational Safety, Suitability, and Effectiveness (OSS&E) responsibility for all managed assets within the PG portfolio across the life cycle.
 - 2.6.15.1 Coordinates modifications to existing common assets through PG per AFI 63-101/20-101.
 - 2.6.15.2 Administers Configuration Control Board activities per AFMCI 63-1201, *Implementing Operational Safety Suitability and Effectiveness (OSS&E) and Life Cycle Systems Engineering (LCSE)*.
 - 2.6.15.3 Ensures OSS&E reporting against stated goals per AF/AFMC/Center guidance.
- 2.6.16 Applies sustaining engineering, engineering expertise, and AF requirements to arrive at technology insertion candidates for full acquisition efforts to include RDT&E.
- 2.6.17 Ensures compliance with Nuclear Certification requirements identified in AFI 63-125, *Nuclear Certification Program*.
- 2.6.18 Maximizes use of Better Buying Power techniques to arrive at timely, responsive, and effective contract vehicles to optimize delivery of capabilities to the field.

- 2.6.18.1 Provides effective life cycle planning to avoid gaps in contract coverage.
- 2.6.18.2 Optimizes use of available contract vehicles to minimize acquisition/repair timelines.
- 2.6.18.3 Plans and executes acquisitions to optimally balance overall requirements and contract economic order quantity (best pricing arrangement).
- 2.6.18.4 Includes provisions for Foreign Military Sales acquisitions in all applicable contract actions.
- 2.6.19 Submits Program Objective Memorandum (POM) input for common requirements, as appropriate. Procurement / investment funds requirements are provided to the Core Function Lead while operations and maintenance funds requirements are vetted through the Centralized Asset Management process. Additional funding requirements are submitted through the MAJCOMs (e.g., Basic Expeditionary Airfield Resource and Mine Resistant Ambush Protected vehicle). Executes appropriate financial planning to include POM inputs for RDT&E funds.
- 2.6.20 Uses standard legacy supply systems and SAF/AQ required reporting systems.
- 2.6.21 Advocates gaining transparent fleet management capability and individual equipment health through LIMS-EV, or other appropriate system.
- 2.6.22 Develop roadmaps/strategies for moving legacy capabilities to common solutions/portfolio.

3.0 RELATIONSHIPS:

- 3.1 PG supports system-level PM activities, as depicted in Figure 2 below:

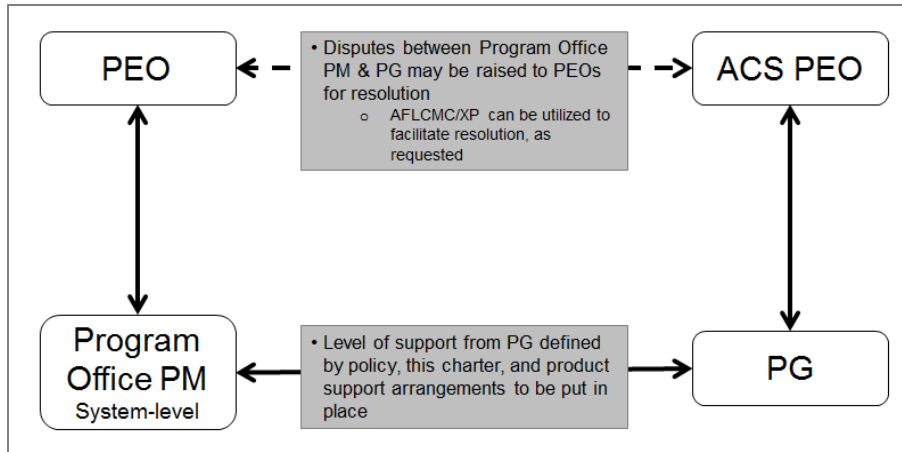


Figure 2, PG Relationships

4.0 RELATED PROCESSES.

- 4.1 SERD—AFI 63-101/20-101, *Integrated Life Cycle Management*, and AFMCMAN 23-3, *Cataloging and Standardization*.
- 4.2 Nuclear Certification—AFI 63-125, *Nuclear Certification Program*.
- 4.3 Program Realignment—AFI 63-101/20-101 and AFLCMC Standard Process R03, *Program Transition*.
- 4.4 Modification Management—AFI 63-101/20-101, *Integrated Life Cycle Management*.
- 4.5 Configuration Control Board—AFMCI 63-1201, *Implementing OSS&E and LCSE*

5.0 DEFINITIONS.

- 5.1 Automatic Test System (ATS) denotes a fully-integrated, computer-controlled suite of electronic test equipment and instrumentation hardware, software, documentation, and ancillary assets designed to verify at any level of maintenance the functionality of Unit Under Test (UUT) assemblies. UUTs include, but are not limited to, Shop Replaceable Units (SRU), Line Replaceable Units (LRU), Shop Replaceable Assemblies (SRA), Weapons Replaceable Assemblies (WRA), circuit cards, aircraft “black boxes”, and other removable components from weapon system platforms or support.
- 5.2 Common ATS (CATS) consists of ATS assets within the DoD inventory (technical documentation, support requirements, provisioning records and maintenance requirements are cataloged as part of the federal logistics information system) applicable to more than one system, subsystem, or end item. For the purposes of this charter, does not include Test, Measurement, and Diagnostic Equipment (TMDE) and support equipment.

- 5.3 Common SE (CSE) consists of equipment assets within the DoD inventory (technical documentation, support requirements, provisioning records and maintenance requirements are cataloged as part of the federal logistics information system) applicable to more than one system, subsystem, or end item. For the purposes of this charter, does not include Test, Measurement, and Diagnostic Equipment (TMDE) and Automated Test Systems (ATS).
- 5.4 Peculiar ATS (PATS) consists of ATS assets applicable to a single system, subsystem, or end item; or CATS assets which have been reconfigured for a specific function or purpose. PATS may require development of technical documentation in federal cataloging records. PATS will require support; support that is currently not available in the DoD system but will have to be developed concurrently with development of the major systems.
- 5.5 Peculiar SE (PSE) consists of equipment assets applicable to a single system, subsystem, or end item; or CSE assets which have been reconfigured for a specific function or purpose. PSE may require development of technical documentation in federal cataloging records. PSE will require support, which is currently not available in the DoD system, but will have to be developed concurrently with development of the major systems.
- 5.6 Test Program Sets (TPSs) are software programs run on ATS and used to test (UUTs). TPSs consists of the software computer program identification number (CPIN), any required UUT interface test adapter(s) (ITAs), and associated technical documentation. A TPS is managed by the organization with OSS&E responsibility for the associated UUT.

Annex A, Automated Test Systems Product Group

1.0 INTRODUCTION:

- 1.1 **AUTHORITY:** AFI 63-101/20-101 has established ATS PG and directs that the PM shall acquire ATS which is, to the maximum extent possible, common and interoperable with other Services and across multiple systems and munitions through coordination with the ATS PG.
- 1.2 **PURPOSE:** The ATS PG, Automatic Test Systems Division (AFLCMC/WNA), has life cycle management responsibilities for CATS, as part of the overall Agile Combat Support (ACS) Program Executive Officer (PEO) portfolio. The ATS PG supports system-level activities to provide efficiency and reduce cost. Respective program offices will retain life cycle management responsibilities for PATS. Some exceptions do exist to gain efficiencies within the ATS enterprise.

2.0 ROLES/RESPONSIBILITIES:

2.1 ATS PG:

- 2.1.1 Serves as the program manager for CATS and product support integrator (PSI) for PATS (assigned) providing support as identified in policy, this charter, or product support arrangements with the program office PM that have been approved by the respective PEO.
- 2.1.2 Manages DoD designated AF Family of Testers (FoT).
- 2.1.3 Supports Joint Panel on Aviation Support Equipment (JPAVSE), as required.
- 2.1.4 Serve as the AF designated voting member on the DoD ATS Management Board (AMB)
 - 2.1.4.1 Is the designated AF leadership office for ATS.
 - 2.1.4.2 Develop and document agreements, processes, and guidance as needed for effective interface and operations with the DoD ATS Executive Directorate consistent with DoD/AF policy and guidance.
 - 2.1.4.3 Coordinate Joint Service projects that have an AF involvement and represent the AF on the various ATS integrated product teams (IPTs), including Joint Service R&D IPTs
- 2.1.5 Process valid waivers for selection of ATS that is not in the DoD-approved FoT, to include coordination with the DoD AMB.

2.1.5.1 Identify program office PMs that are non-compliant with policy/guidance or waiver disputes regarding ATS to the ACS PEO.

2.1.6 Act as approval authority for ATS Family of Tester candidates.

Annex B, Support Equipment Product Group

1.0 INTRODUCTION:

- 1.1 **AUTHORITY:** AFI 63-101/20-101 has established a Support Equipment Product Group and directs that the PM shall acquire SE which is, to the maximum extent possible, common and interoperable with other Services and across multiple systems and munitions through coordination with the SE PG.
- 1.2 **PURPOSE:** The SE PG, Support Equipment & Vehicles Division (AFLCMC/WNZ), has life cycle management responsibilities for common support equipment (CSE) assets, including vehicles, as part of the overall Agile Combat Support (ACS) Program Executive Officer (PEO) portfolio. The SE PG supports system-level activities to provide efficiency and reduce cost. Respective program offices will retain life cycle management responsibilities for peculiar support equipment (PSE) assets. Some exceptions do exist to gain efficiencies within the SE enterprise.
 - 1.2.1 SE PG is not responsible for SE assets that are only utilized between/among Contractor Logistics Support (CLS) programs.

2.0 ROLES/RESPONSIBILITIES:

2.1 SE PG:

- 2.1.1 Serves as the Product Support Integrator (PSI) for CSE providing support as identified in policy, this charter, or product support arrangements with the program office PM that have been approved by the respective PEO.
- 2.1.2 Serves as the AF representative to the Joint Panel on Aviation Support Equipment (JPAVSE).
- 2.1.3 Ensures all vehicle requests and requirements are processed through the Vehicle & Equipment Management Support Office, as the AF authority for approved vehicle requirements.